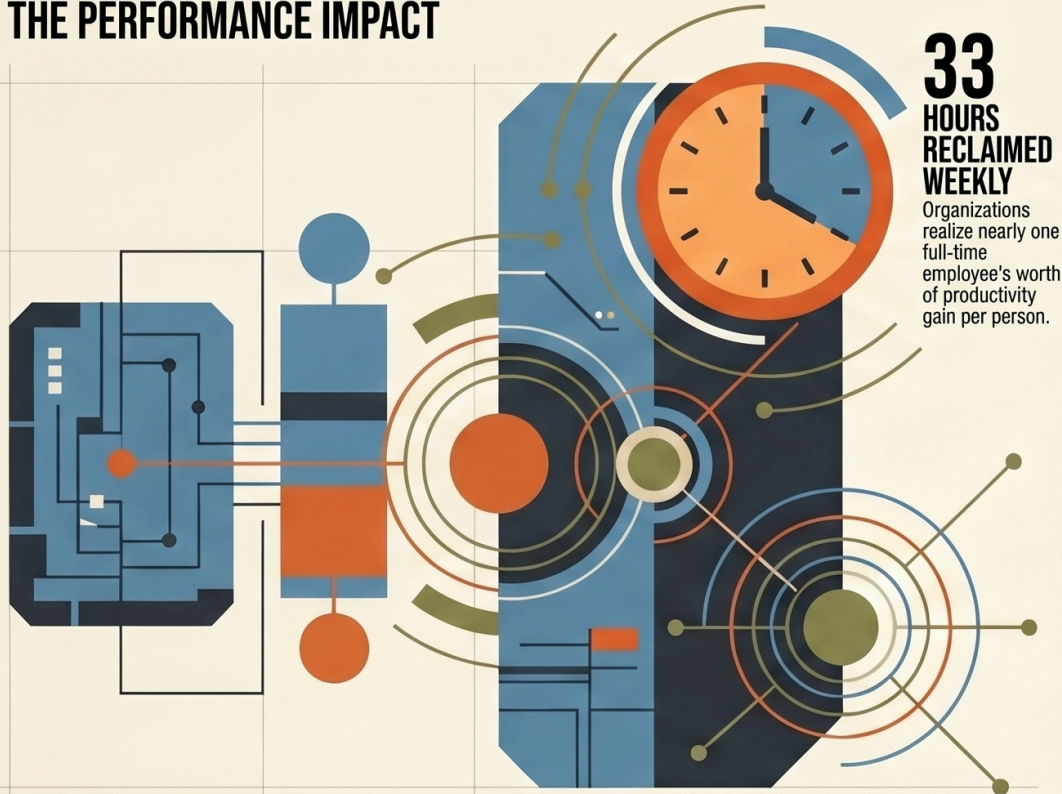


THE AGENTIC EDGE: MASTERING AI-HUMAN COLLABORATION

AI agents are transitioning from speculation to a strategic imperative, offering early adopters insurmountable advantages through autonomous systems that perceive, decide, and act within existing infrastructures.

THE PERFORMANCE IMPACT



GENERATIVE AI

Action: Content Creation
Direction: Constant Human Prompting
System Interaction: Isolated Responses

AGENTIC AI

Action: Autonomous Workflow Execution
Direction: Minimal Human Intervention
System Interaction: Multi-system Integration & Decisioning

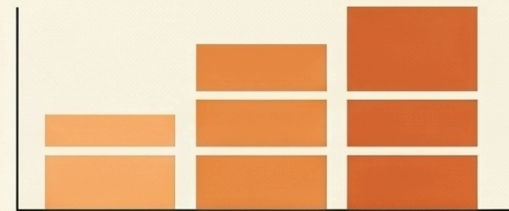
FEATURE COMPARISON

	GENERATIVE AI	AGENTIC AI
ACTION	Content Creation	Autonomous Workflow Execution
DIRECTION	Constant Human Prompting	Minimal Human Intervention
SYSTEM INTERACTION	Isolated Responses	Multi-system Integration & Decisioning



FROM ADMINISTRATION TO INNOVATION

Automating routine coordination reclaims the 47% of time spent on email and searching.



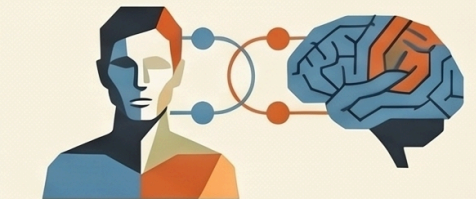
ACCELERATED INNOVATION VELOCITY

Fracing workers from administrative burden directly increases the frequency of new ideas tested.

STRATEGIC IMPLEMENTATION

COLLABORATION-FIRST INFRASTRUCTURE

Integrate agents directly into existing communication tools to leverage rich situational context.



THE PARTNERSHIP MODEL

Move beyond simple automation to a model where humans and agents have complementary roles.