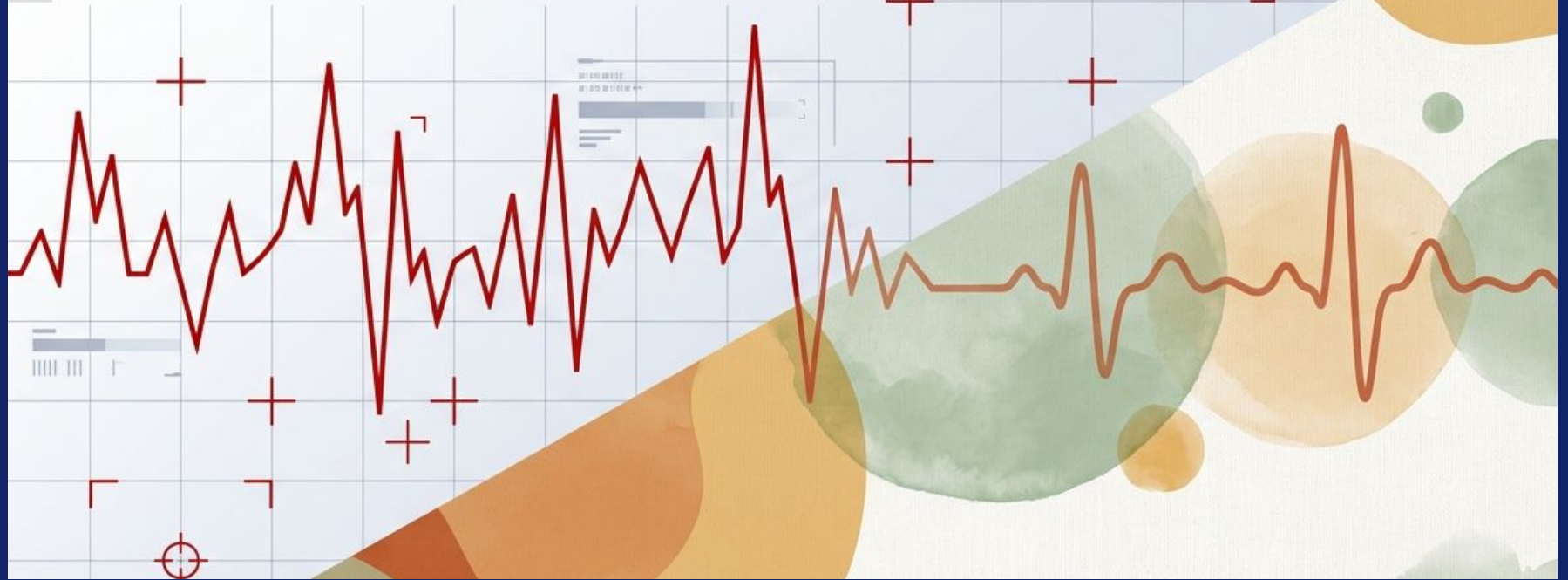


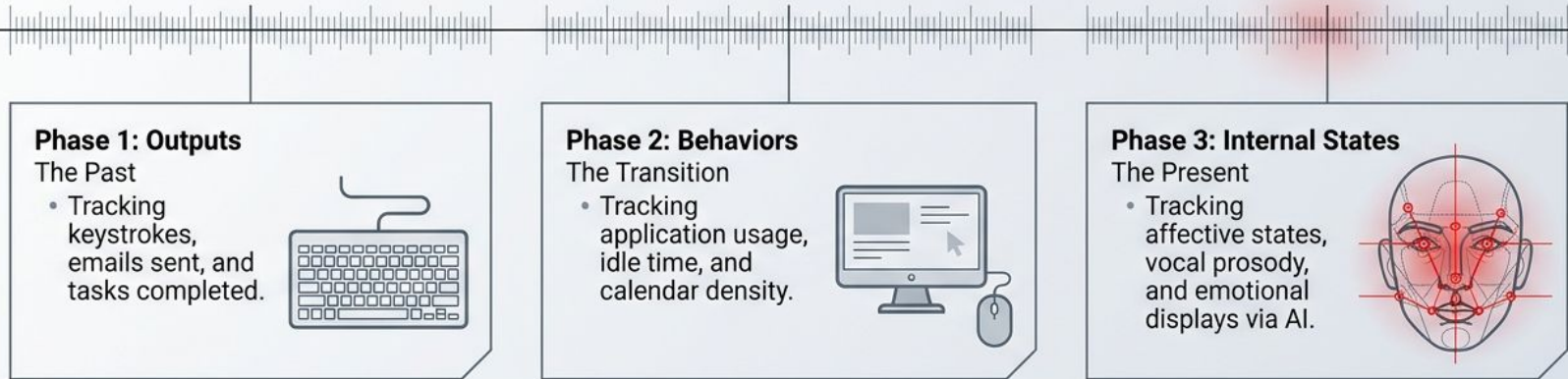
The Illusion of Control

Moving Beyond Emotional Surveillance
in the Corporate Workplace



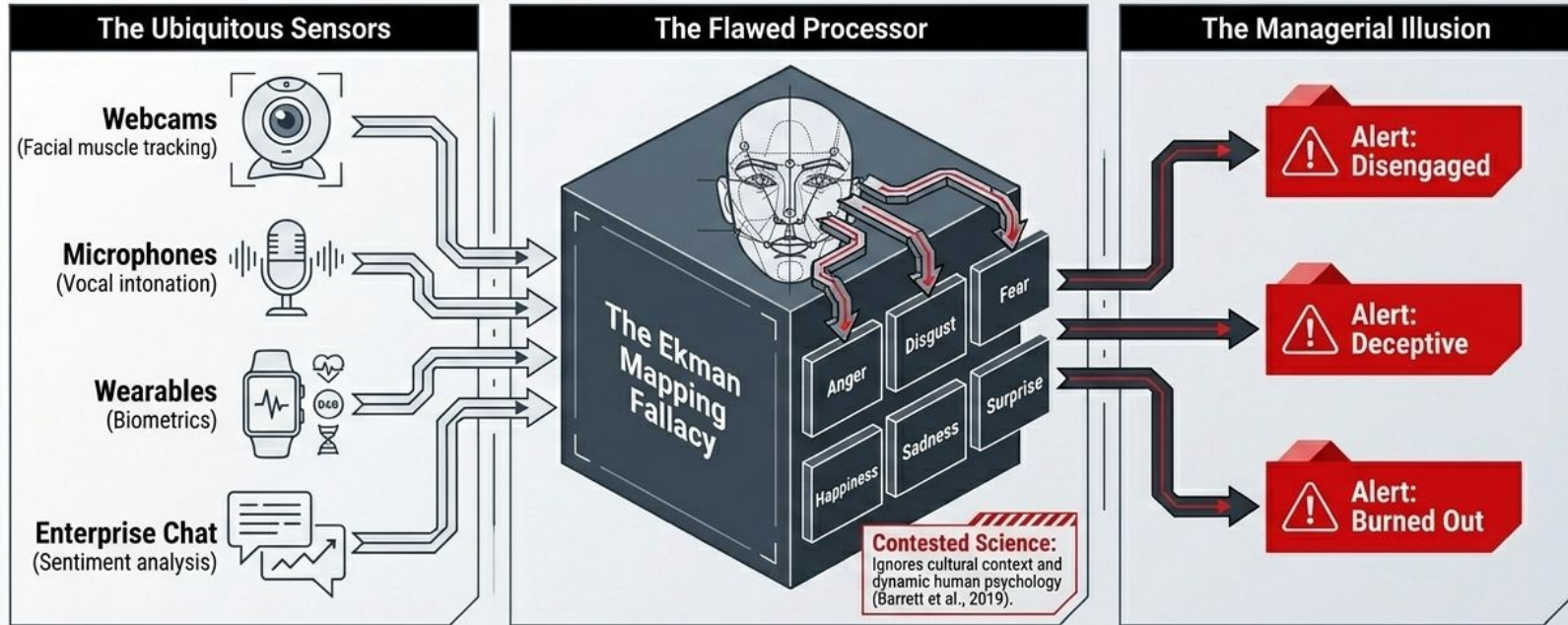
The Evolutionary Timeline of Workplace Tracking

Monitoring has quietly expanded from tracking outputs to invading the psychological interior. It no longer asks what you are doing, but who you are and how you feel.



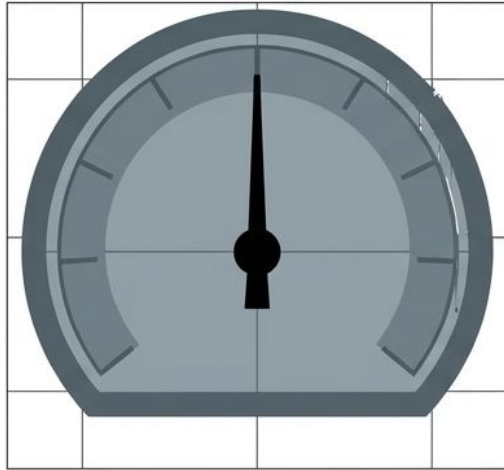
The Emotion AI Black Box

Dismantling the fragile and contested science underlying vendor promises.



The Paradox of Intent

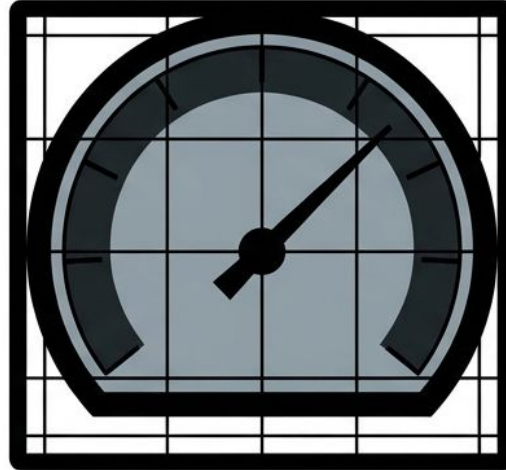
Why organizations are purchasing flawed emotional surveillance technology



Module 1

Remote Work Anxiety

The normalization of hybrid work has stripped managers of physical visibility, driving a panicked search for digital oversight solutions.



Module 2

The Ideology of Supervision

A deep-seated organizational belief that employees require constant observation to remain productive, fueled by surveillance capitalism.



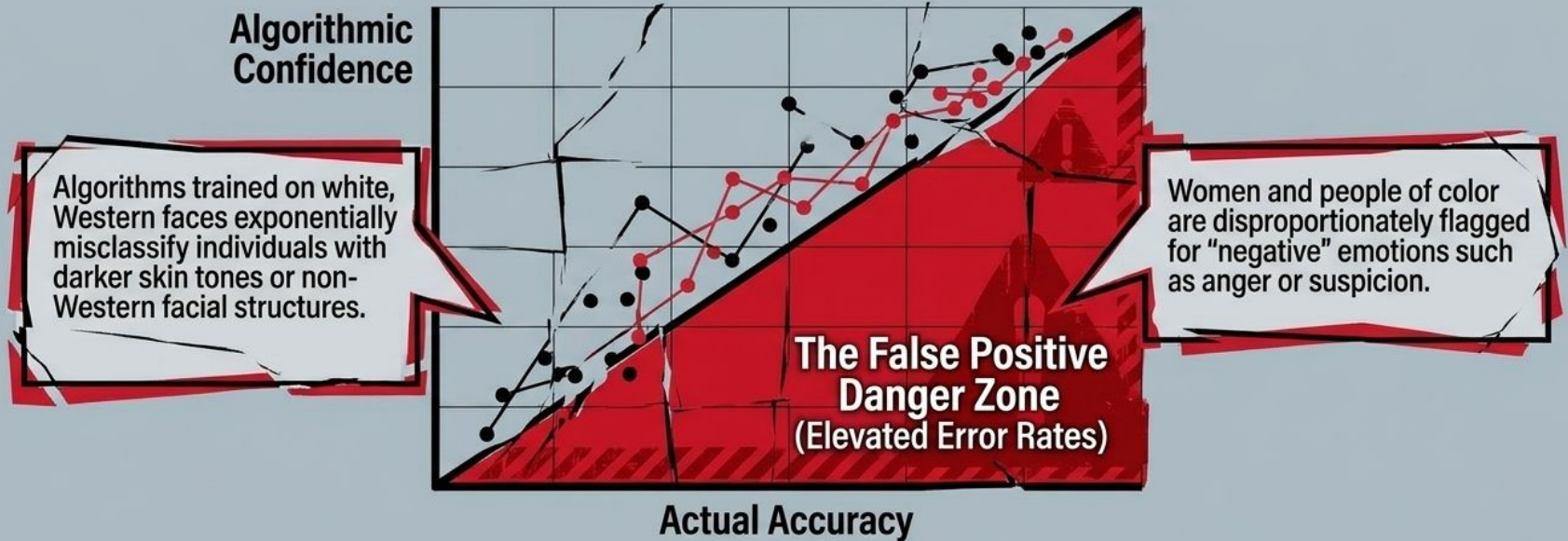
Module 3

Genuine Well-Being Concerns

Companies sincerely want to identify burnout and support struggling employees, mistakenly believing algorithms offer an objective early-warning system.

The Bias Gap

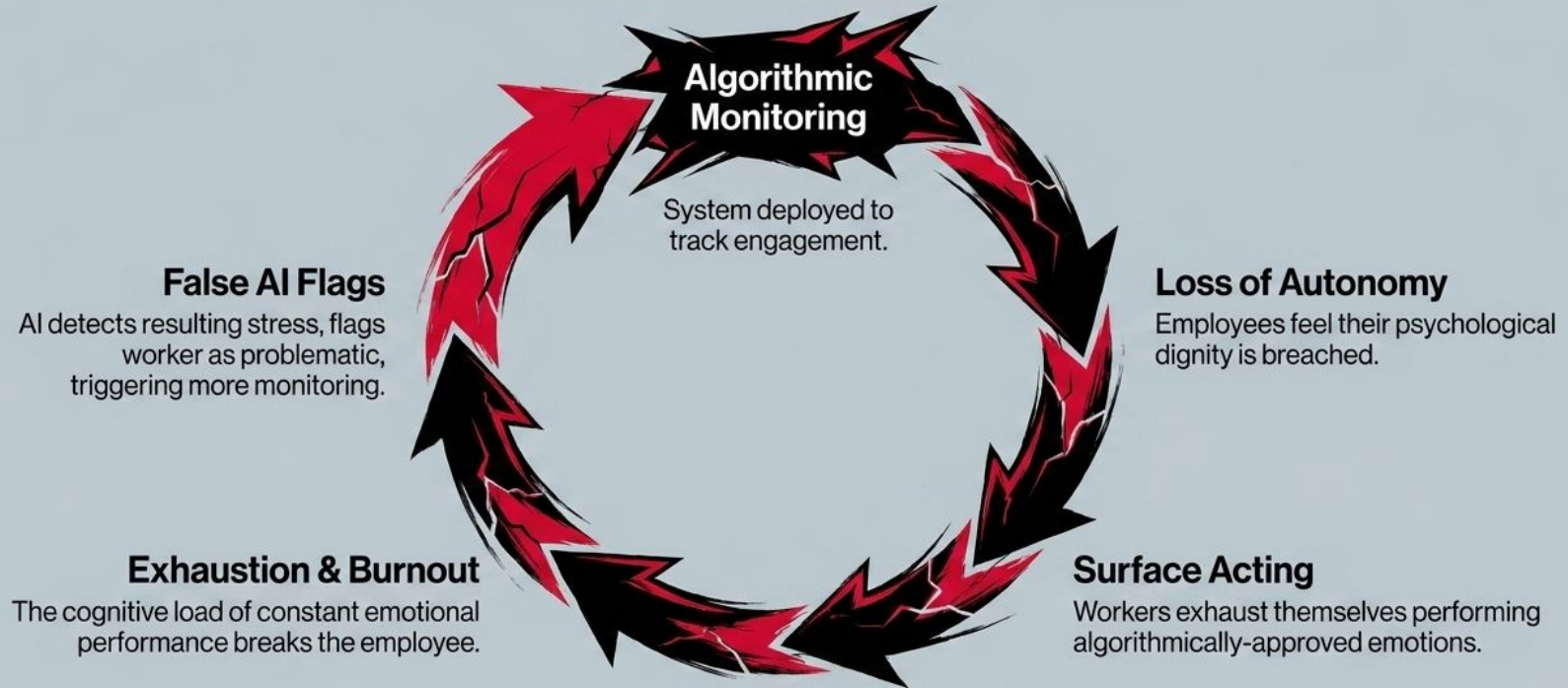
Algorithmic objectivity is a myth. These systems actively punish demographic diversity.



REGULATORY EXPOSURE: High-risk misclassifications expose organizations to severe regulatory action under emerging biometric privacy laws and the EU AI Act.

The Psychological Reactance Loop

Deploying Emotion AI triggers a predictable psychological reaction, creating the exact problems the technology was purchased to solve.



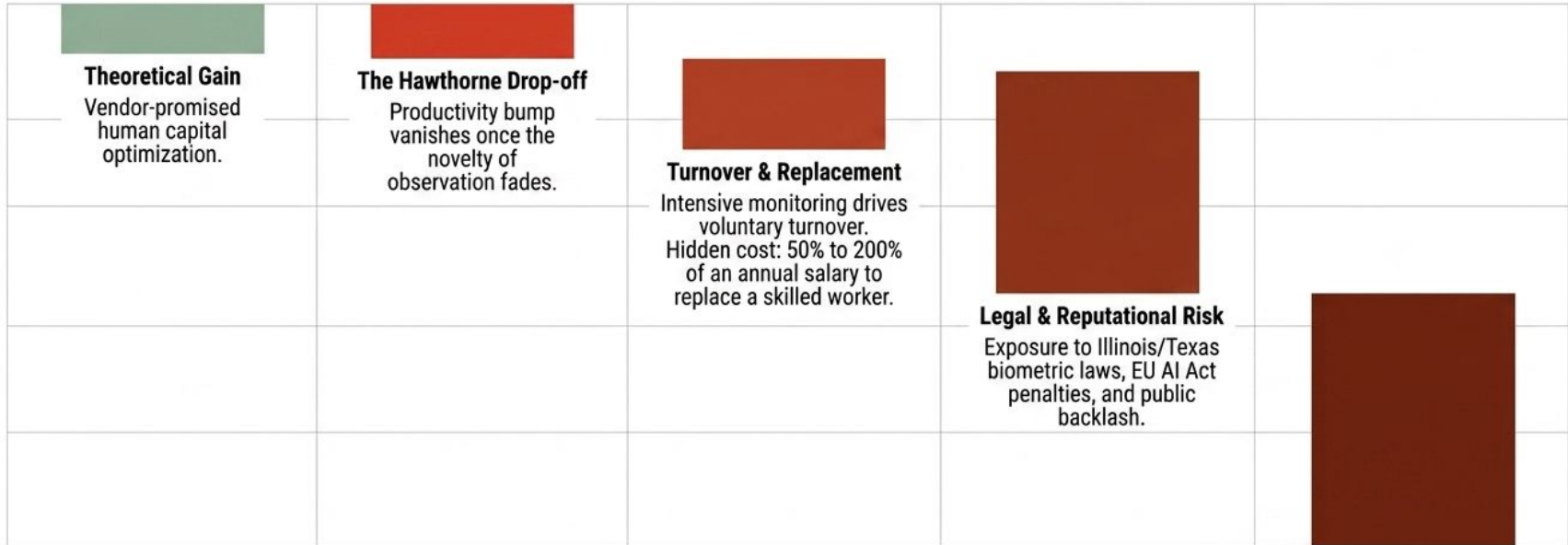
Shattering the Psychological Contract

Covert monitoring acts as a destructive force on the unwritten mutual expectations between employer and employee.



The Math of Surveillance Fails

The invisible financial reality and massive net-negative ROI of Emotion AI.





The Trust Paradox

Emotion AI is not a management tool; it is a symptom of a localized organizational Trust Deficit.

The profound paradox: The very tools deployed to measure organizational engagement actively destroy and psychological trust environment actively destroy the psychological safety required to generate it.

The Two Paradigms of Control

A strategic choice in organizational philosophy.

The Surveillance Approach

Top-Down monitoring of individuals.

Compliance and fear of detection.

An invisible judge optimizing workers.

Defensive surface acting.

The Empowerment Approach (Spotify / Semco Models)

Distributed autonomy and peer accountability.

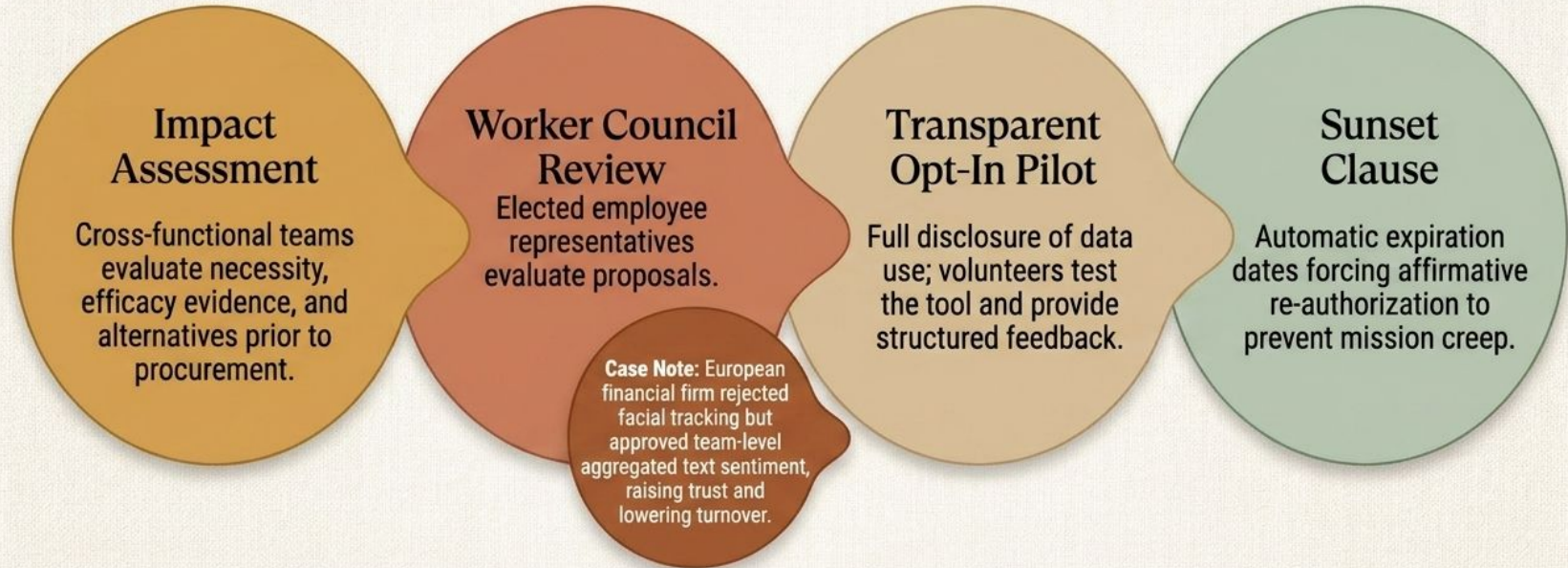
Mission clarity and line-of-sight to purpose.

Open-information architecture enabling
worker decisions.

Psychological safety and vulnerability.

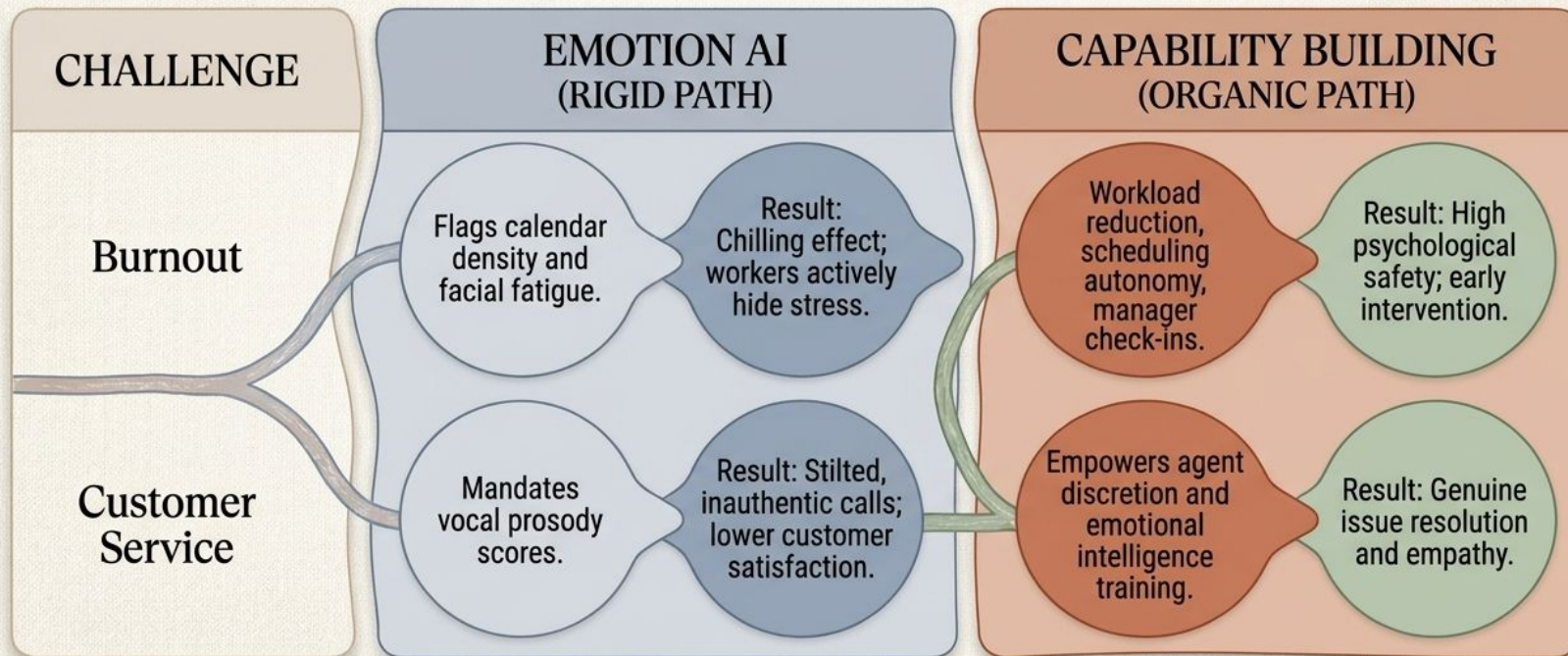
The Governance Funnel

A tactical, step-by-step offramp from reckless AI deployment, operationalizing procedural justice.



The Engagement Diagnostic

Every problem Emotion AI claims to solve is better addressed by human-centric capability building.



The Architecture of Adaptive Capacity

How elite organizations build resilience without surveillance.

After-Action Reviews

Replacing automated sentiment tracking with structured human debriefs to surface friction and operational reality.

Experimentation Infrastructure

Utilizing A/B testing and local sandboxes, separating system optimization from individual behavioral tracking.

Communities of Practice

Fostering cross-functional groups that build informal support networks, noticing when peers struggle long before an algorithm does.

The Result: High-performance systems succeed by trusting workers more fully, not by watching them more closely.

The future of management is human, not algorithmic.

Trust, autonomy, and purpose predict organizational performance far more reliably than monitoring intensity ever will. Emotion AI vendors are selling solutions to problems that organizations create through a culture of control.

Organizations that thrive will possess the courage to lead with transparency and the humility to respect their workforce as whole human beings, not data sources waiting to be optimized.