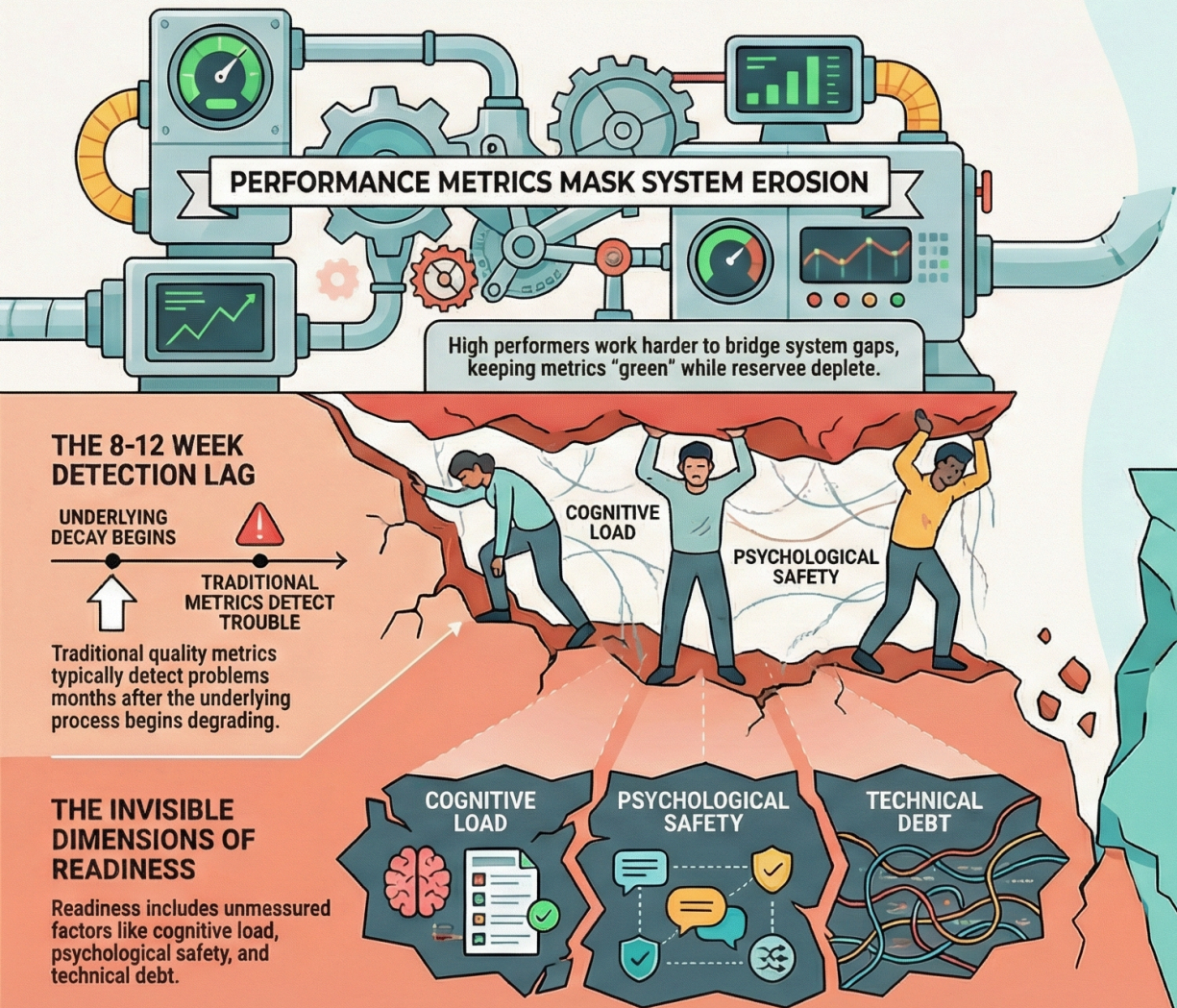
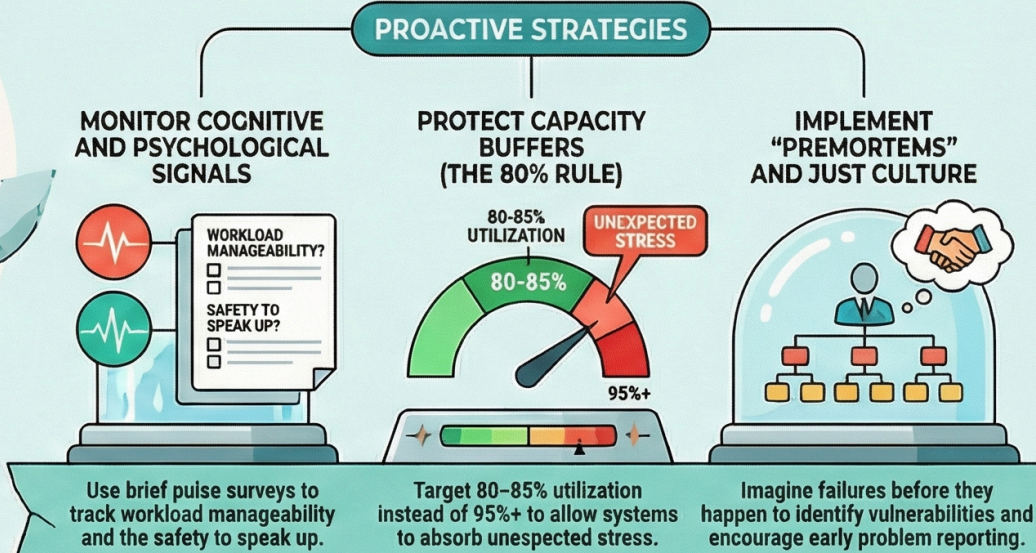


# Silent Decay: Why Systems Fail Before Metrics Do

## THE COMPENSATION TRAP



## THE SOLUTION: MOVING TO LEADING INDICATORS



## COMPARISON: TRADITIONAL VS. READINESS-BASED MONITORING

Metric Type	TRADITIONAL (LAGGING)	READINESS-BASED (LEADING)
Outcomes	Revenue  Incidents	Cognitive Load  Safety
Utilization	Maximize (95%+)	Optimized (80-85%)
Response	Reactive (After Failure)	Prospective (Vulnerability Search)