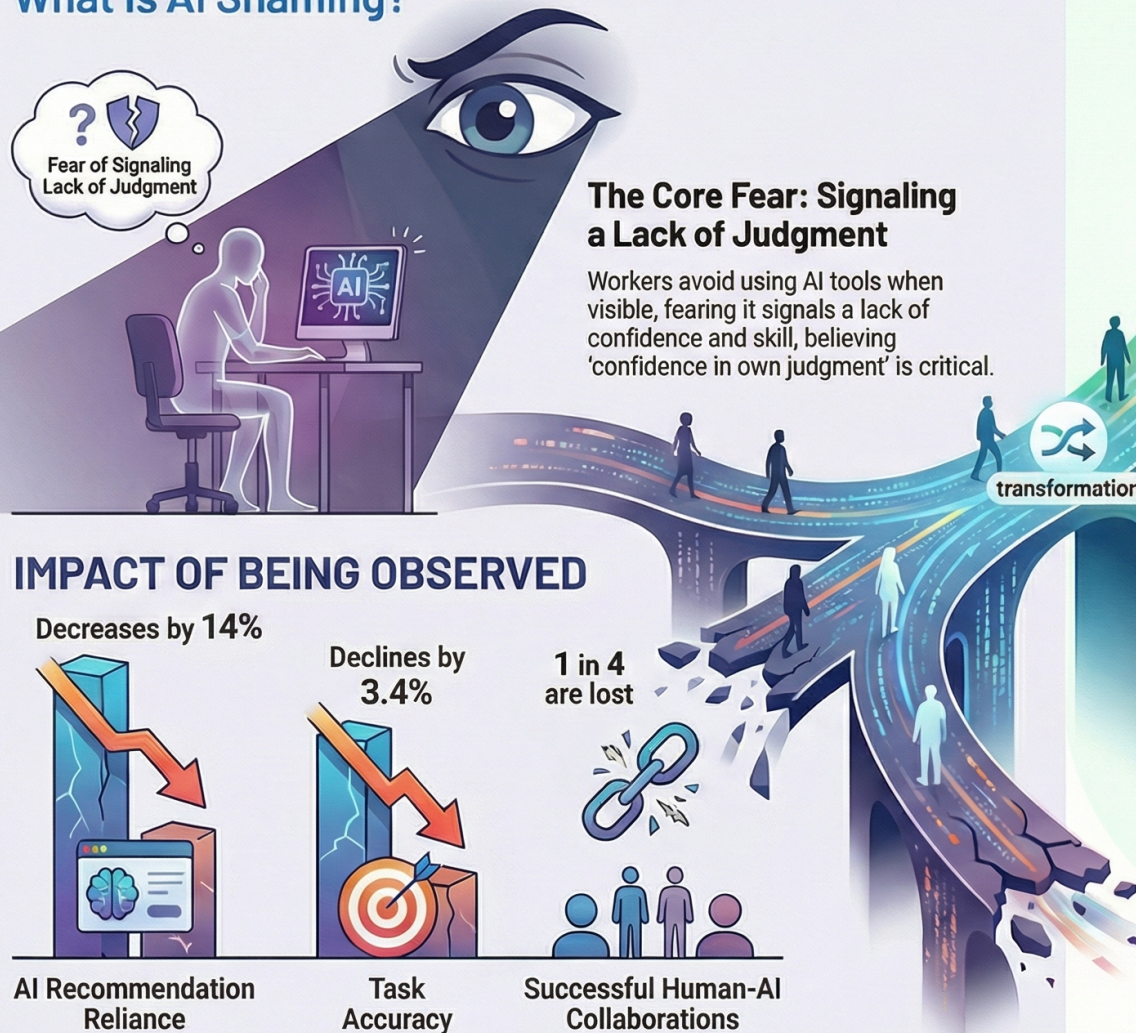


AI Shaming: The Hidden Threat to Productivity

What is AI Shaming?



HOW ORGANIZATIONS CAN RESPOND

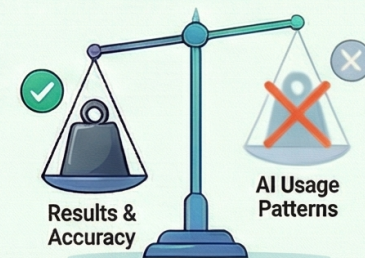
Redefine Competence Around Collaboration

Update performance reviews to explicitly reward the effective integration of AI tools.



Separate Outcome from Process in Evaluations

Assess employees on results (e.g., diagnostic accuracy) and not on their AI usage patterns.



Foster 'AI Fluency' Through Training & Leadership

Offer simulation-based training and encourage leaders to openly model their own AI use.

