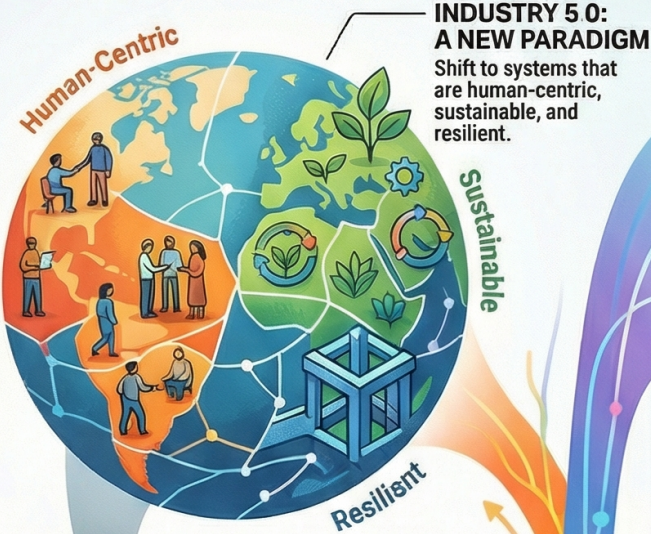


# The Rise of the Polymath Leader: Navigating Industry 5.0

## THE PROBLEM: INDUSTRY 5.0 LEADERSHIP GAP



### SPECIALIST LEADERS ARE NO LONGER ENOUGH

Challenges cross old boundaries, blending AI, psychology, ethics, and ecology



Specialist Leaders



### THE RISE OF THE POLYMATH LEADER

A leader who learns across disciplines and integrates diverse knowledge into coherent strategies.

## THE SOLUTION: HOW TO BUILD POLYMATHIC LEADERS

### REDESIGN CAREER PATHS & DEVELOPMENT

Implement structured cross-disciplinary learning programs and rotational assignments across functions.



#### SIEMENS



Leadership academies with humersive rotations in data science, human factors, and sustainability.



Development programs with rotations through supply chain, brand management, and digital projects.

### FOSTER A CULTURE OF INTEGRATION

Use cross-functional teams and promote psychological safety to encourage curiosity and collaboration.



#### Schneider Electric



Cross-functional teams of engineers, data scientists, and social scientists to solve sustainability challenges.

### RECRUIT FOR COGNITIVE DIVERSITY

Hire candidates with non-traditional career paths who demonstrate learning agility.



### CORE CAPABILITIES OF A POLYMATH LEADER



#### Active Knowledge Acquisition

Continuously learns in fields outside their primary expertise.



#### Conceptual Bridging

Identifies analogies and principles that apply across different domains.



#### Integrative Synthesis

Weaves insights from multiple fields into a single, coherent strategy.