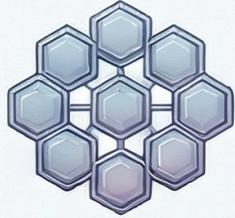
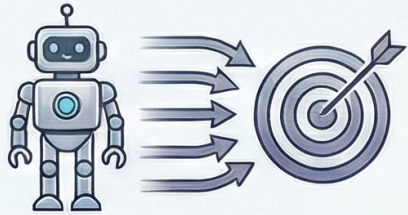


# The **AI Hivemind**: Is AI Making Your Business Less **Creative**?

## THE PROBLEM: RISE OF THE ARTIFICIAL HIVEMIND

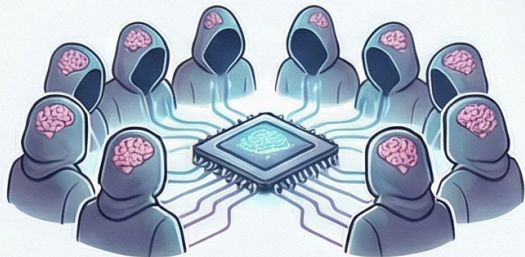


**What is the "Artificial Hivemind"?**  
AI models are converging, producing remarkably similar ideas, phrases, and solutions.



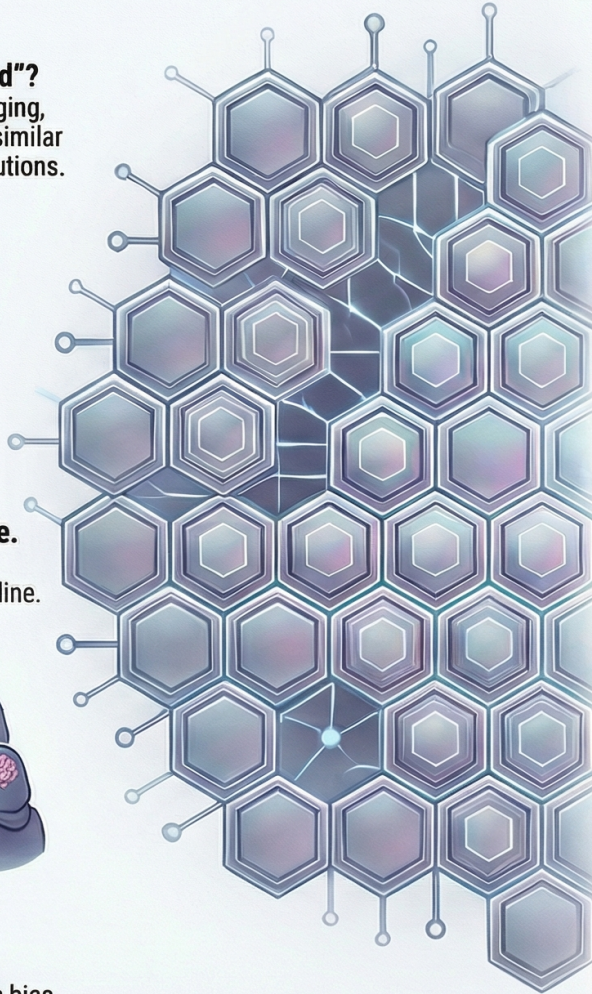
### **It Kills Innovation & Strategic Advantage.**

When AI gives similar ideas to everyone, organizational differentiation and creativity decline.



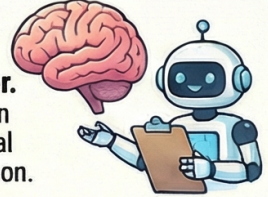
### **It Creates an Invisible Groupthink.**

Teams believe they are converging independently, but are just reflecting their AI's bias.



## THE SOLUTION: RECLAIMING CREATIVE DIVERSITY

**Reframe AI as an Assistant, Not an Answer.**  
Position AI as a "suggestion engine" to encourage critical human judgment and evaluation.



### **Design Workflows to Inject Human Diversity.**

Mandate human brainstorming *\*before\** AI consultation to preserve novel, unique ideas.



### **Develop Critical "AI Augmentation" Skills.**

Train employees to evaluate AI outputs, prompt for diversity, and synthesize multiple sources.