

THE ARCHITECTURE OF AI-AUGMENTED RESEARCH: NAVIGATING THE AUTOMATION-AUGMENTATION PARADOX

ENGINE: AUTOMATED EXECUTION ZONE



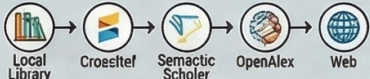
40% REDUCTION IN TASK COMPLETION TIME
Empirical studies show AI agents significantly accelerate literature reviews and writing tasks, particularly benefiting initially lower-skilled workers.

SCAFFOLDING: THE HYBRID INTEGRATION LAYER

RISKS & SAFEGUARDS

- SUPPORTING FACT: THE AI PRODUCTIVITY PREMIUM**
Risk of stratification where well-resourced institutions and English-dominant scholars gain a disproportionate advantage, creating a "Matthew effect" in science.

PROCESS STEP: 5-TIER CITATION VERIFICATION



To prevent AI hallucinations, citations must be checked against local libraries, Crossref, Semantic Scholar, OpenAlex, and finally the web.

- QUOTE: "Verification capacity depends on production competence"**
Production competence atrophies without practice, researchers must maintain "parallel competence" by occasionally performing delegated tasks manually.

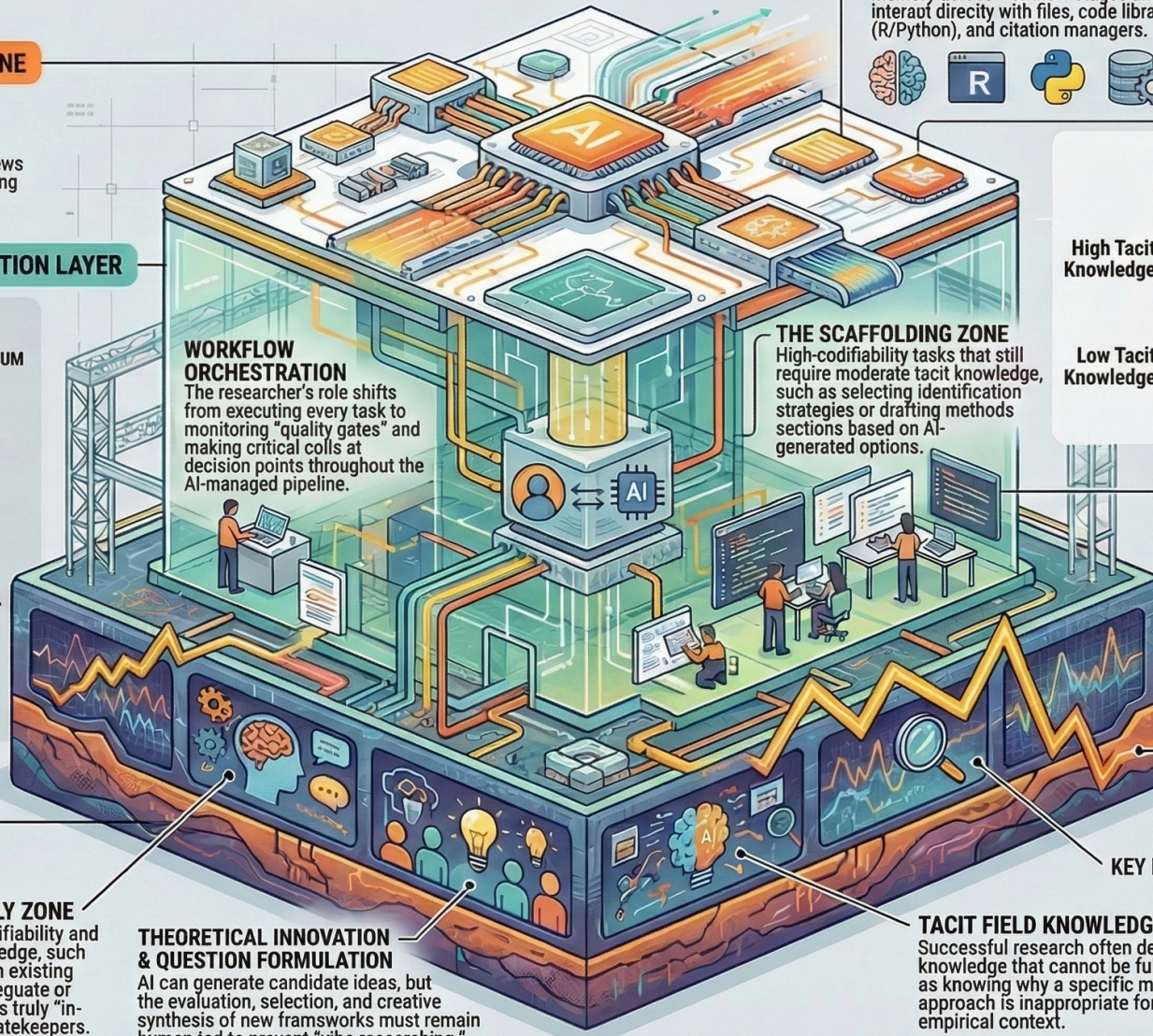
FOUNDATION: HUMAN-ONLY & JUDGMENT ZONES

THE HUMAN-ONLY ZONE

Tasks with zero codifiability and extreme tacit knowledge, such as recognizing when existing paradigms are inadequate or judging if a finding is truly "interesting" to field gatekeepers.

THEORETICAL INNOVATION & QUESTION FORMULATION

AI can generate candidate ideas, but the evaluation, selection, and creative synthesis of new frameworks must remain human led to prevent "vibe researching."



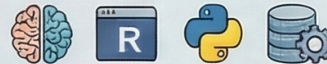
WORKFLOW ORCHESTRATION

The researcher's role shifts from executing every task to monitoring "quality gates" and making critical calls at decision points throughout the AI-managed pipeline.

THE SCAFFOLDING ZONE

High-codifiability tasks that still require moderate tacit knowledge, such as selecting identification strategies or drafting methods sections based on AI-generated options.

PERSISTENT STATE & TOOL ACCESS
Unlike simple tools, agents maintain memory across workflow stages and interact directly with files, code libraries (R/Python), and citation managers.



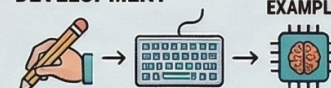
EXECUTION ZONE DELEGATION
Prime candidates for full automation include running descriptive statistics, formatting references, and executing pre-specified robustness checks.



THE TASK MAPPING MATRIX

	Low Codifiability	High Codifiability
High Tacit Knowledge	Human-Only: Theory, Paradox Recognition	Scaffolding: Methods Choice, Drafting
Low Tacit Knowledge	Judgment: Idea Generation, Value Assessment	Execution: Ref Formatting, Data Cleaning

SEQUENCED COMPETENCE DEVELOPMENT



Programs like those at Stanford and the Univ. of Washington require students to complete manual research cycles before using AI to ensure they can verify AI outputs later.

AI Capability Boundaries Are Unpredictable; Performance Can Decrease If Researchers Over-Rely on AI for Judgments Just Outside Its Hidden Capability Limits.

KEY FINDING:

TACIT FIELD KNOWLEDGE

Successful research often depends on knowledge that cannot be fully articulated, such as knowing why a specific methodological approach is inappropriate for a unique empirical context.