

# The Human-Machine Partnership: Reimagining Work for the AI Era

Rather than wholesale job displacement, AI is ushering in a partnership model where people, AI agents (cognitive tasks), and robots (physical tasks) collaborate. Success depends on shifting from automating isolated tasks to redesigning complete workflows.

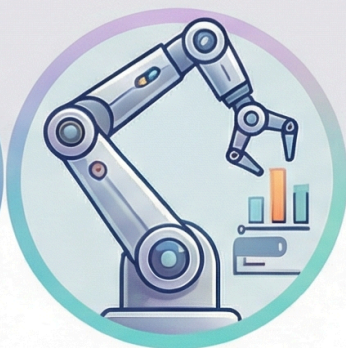
## The New Workforce Trio



**PEOPLE:**  
Provide judgment

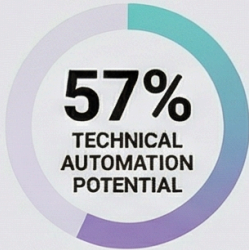


**AGENTS:**  
Handle cognitive tasks



**ROBOTS:**  
Execute physical activities

**\$2.9 TRILLION  
ECONOMIC POTENTIAL**  
by 2030 through reimagining workflows  
around people-agent-robot collaboration.



While over half of work hours are automatable, actual adoption depends on organizational and cultural readiness.

<b>People-centric</b> (e.g., Nurses, Firefighters)		34% of US Workforce	Avg Annual Pay: <b>\$71,000</b>
<b>Agent-centric</b> (e.g., Accountants, Devs)		30% of US Workforce	Avg Annual Pay: <b>\$70,000</b>
<b>Robot-centric</b> (e.g., Cooks, Welders)		8% of US Workforce	Avg Annual Pay: <b>\$42,000</b>

## The Evolution of Skills

**72% of SKILLS**  
are "SHARED"

Most skills span both automatable and non-automatable work, meaning they will evolve, not disappear.

**7x**  
**JUMP IN  
AI FLUENCY DEMAND**  
Demand for the ability to use and manage AI tools is the fastest-growing skill category.

**THE PERSISTENCE OF HUMAN SKILLS**  
Communication, leadership, and problem-solving remain the "connective tissue" of the evolving labor market.

