

Reimagining Human Capital: Navigating the AI Ripple Effect

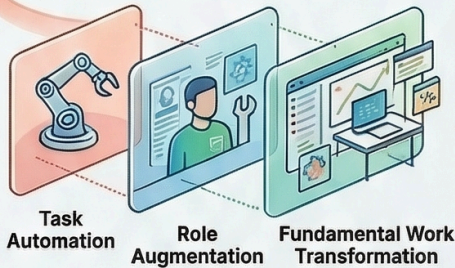
This infographic provides leaders with a framework for understanding how AI adoption triggers complex organizational changes and how to manage those "ripple effects" through evidence-based strategies.

THE CHALLENGE OF AI "RIPPLE EFFECTS"



The 70% Failure Trap
Most AI projects fail because leaders underestimate the organizational change required for human-machine integration.

The Triple Impact of Adoption



AI triggers task automation, role augmentation, and fundamental work transformation simultaneously, not in isolation.

Strategic Autonomy vs. Intent



Success depends on choosing the right level of AI autonomy and redesigning workflows accordingly.

PERFORMANCE BENEFITS OF SUCCESSFUL AI INTEGRATION



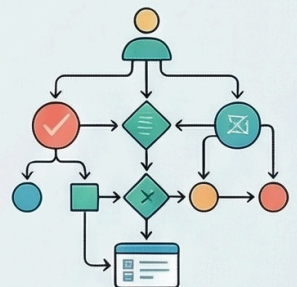
EVIDENCE-BASED LEADERSHIP RESPONSES



Transparent Change Communication
Provide explicit timelines and clear commitments regarding employee retention and redeployment opportunities.



The 100-Hour Learning Threshold
Meaningful skill development for AI-intensive roles requires 100-200 hours of structured learning.



Redesign Operating Models
Move beyond "bolt-on" AI by redefining decision rights and re-sequencing entire workflow patterns.