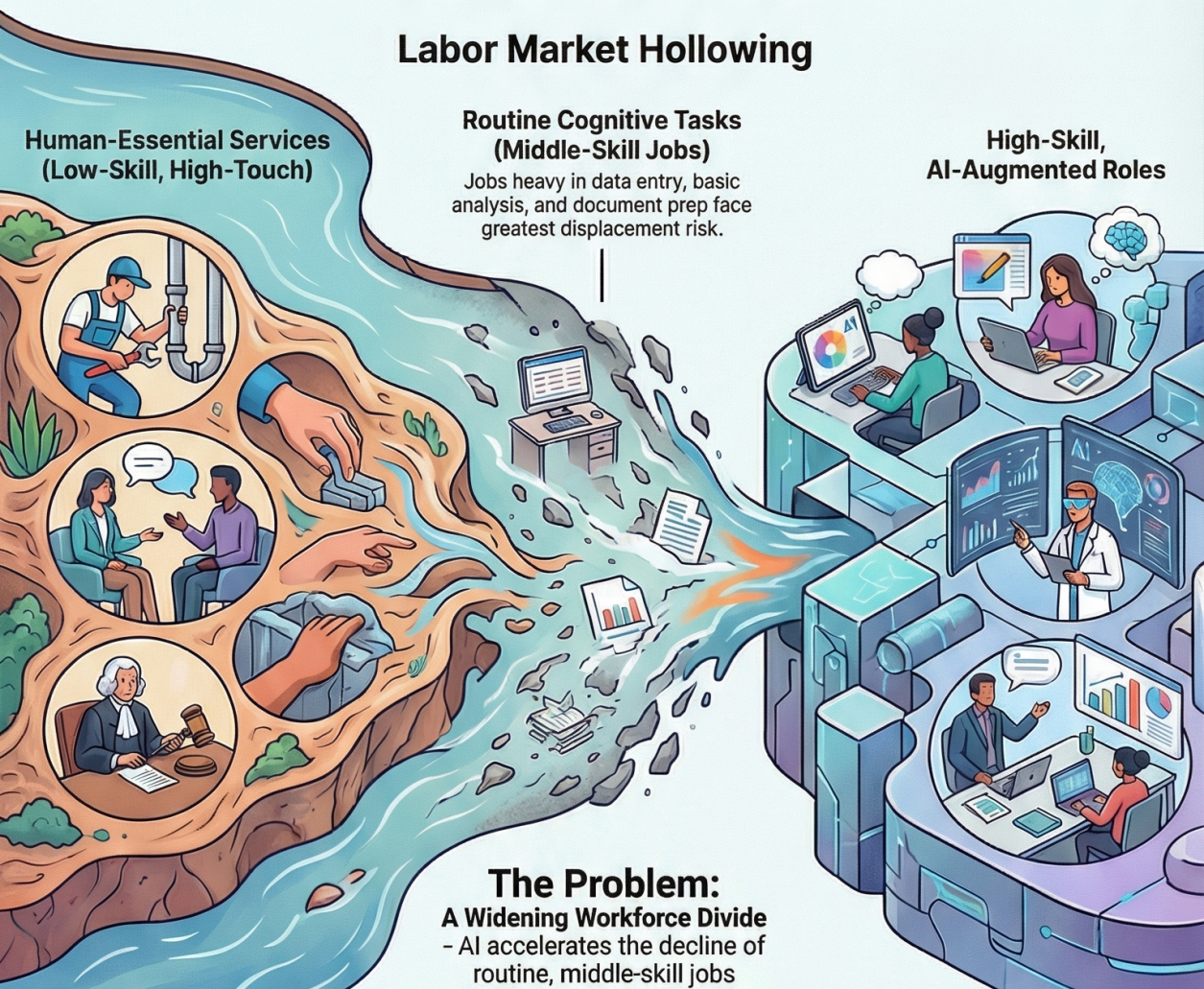


The Future of Work: How AI Reshapes, Not Replaces, Human Labor

Labor Market Hollowing



Work requiring physical dexterity, complex social interaction, or high-stakes judgment remains difficult to automate.

The Problem:
A Widening Workforce Divide
- AI accelerates the decline of routine, middle-skill jobs while increasing demand at high- and low-skill ends.

The Solution: Building an Adaptive Future

