

# The Global Lens of Authentic Leadership

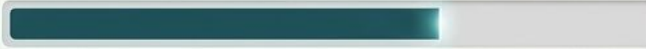
When 'Being Yourself'  
Works—And When It Doesn't



Synthesizing meta-analytic evidence from 292 studies across 40+ countries to redefine authenticity for the multicultural enterprise.

## The Rise of Authenticity

Trust ( $\rho = 0.665$ )



Psychological Capital ( $\rho = 0.504$ )



Work Engagement ( $\rho = 0.454$ )



**Context:** Over 10,000 academic papers published on the topic in 2024 alone.

## The Underlying Paradox

# 42.9%

**Culture moderates nearly half of all relationships between authentic leadership and follower outcomes.**

*The implicit assumption that 'being yourself' works equally well everywhere is empirically false. Individualism strengthens the effect; high power distance and uncertainty avoidance attenuate it.*

**Self-Awareness**  
Understanding limitations,  
seeking feedback, and  
recognizing behavioral impact.

**Internalized Moral  
Perspective**

Maintaining ethical consistency  
and acting on deep principles,  
resisting political pressures.

**Values-Based  
Leader  
Signaling**

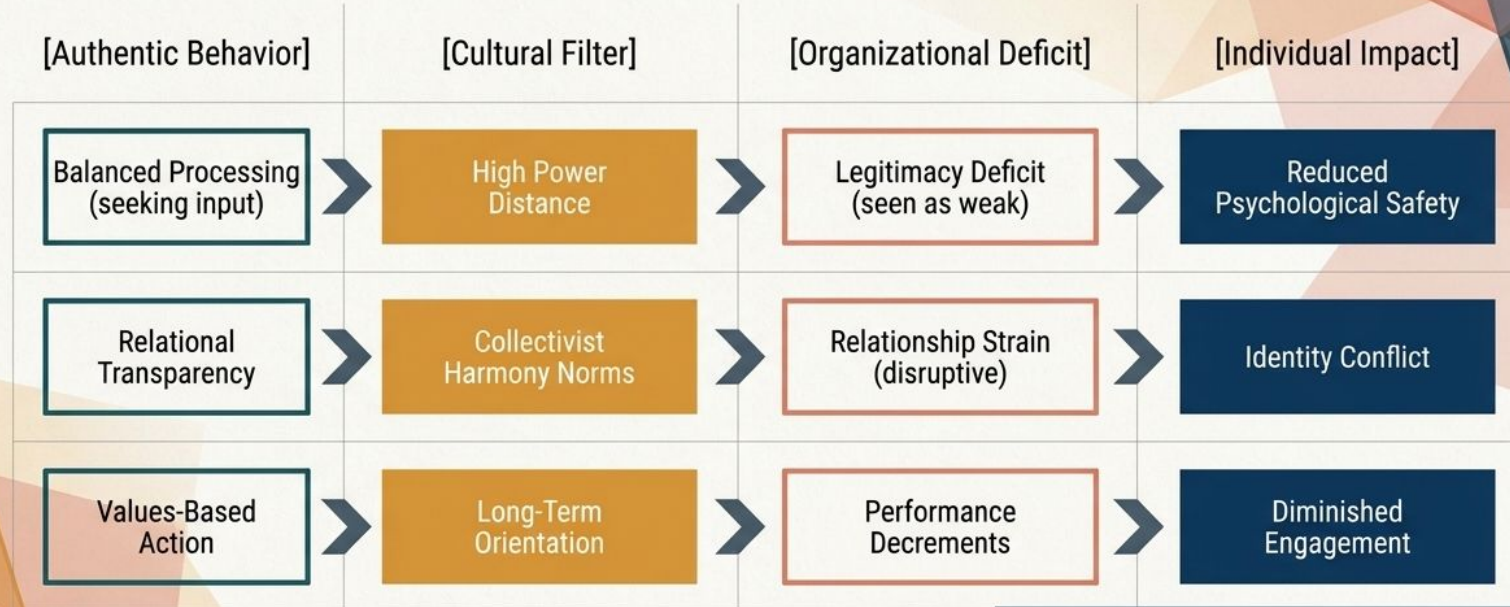
**Balanced Processing**  
Objectively analyzing data,  
intentionally seeking dissenting  
views, and minimizing bias.

**Relational Transparency**

Openly sharing rationale,  
expressing thoughts appropriately,  
and clarifying intentions.

These four pillars reliably create genuine human connection—but only if the behavioral signals are interpreted as intended by the receiving culture.

# The Breakdown: When Authenticity Misfires



GLOBE Studies Context:  
A participative approach highly effective in low power distance cultures frequently triggers cognitive dissonance in high power distance cultures.

# The Cultural Lens Diagnostic: Intent vs. Interpretation

Leader Behavior (The Signal)	Western / Egalitarian Lens	Eastern / Hierarchical Lens
Openly admitting mistakes to the team.	Registers as humility, integrity, and builds trust.	Registers as <b>poor judgment</b> , undermines authority, and damages collective face.
Soliciting subordinate input on key decisions.	Empowers the team and drives innovation.	<b>Signals leader incompetence</b> ; causes anxiety about shifting hierarchy.
Expressing vulnerability or ambiguity about the future.	Fosters deep human connection and psychological safety.	<b>Violates expectations</b> of stability, creating severe stress and disengagement.

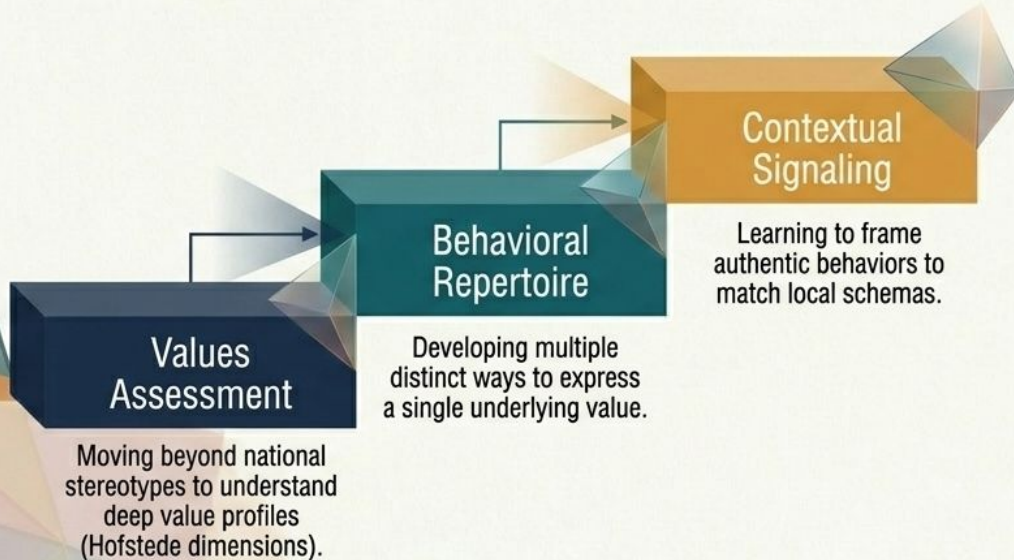
## The Pivot: A Synthesized Framework



**“True authenticity is not about expressing a single, fixed self regardless of context. It is about signaling your core values in culturally resonant ways.”**

# Strategy 1: Cultural Intelligence (CQ) Development

## From Assessment to Adaptation



## In Practice

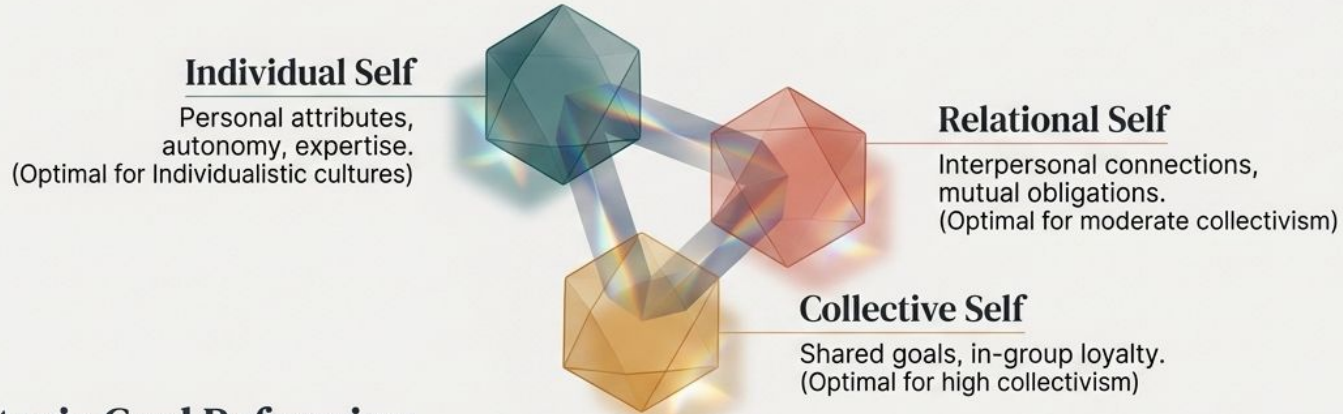
### Unilever

Developed a program distinguishing a leader's 'Core' (non-negotiable principles) from their 'Flex' (adaptable expressions).

### PwC

A senior partner adapted her participative style for Southeast Asian colleagues by maintaining consensus-building while providing highly explicit structural guidance and decision authority.

# Strategy 2: Identity Work & Reframing



## Strategic Goal Reframing

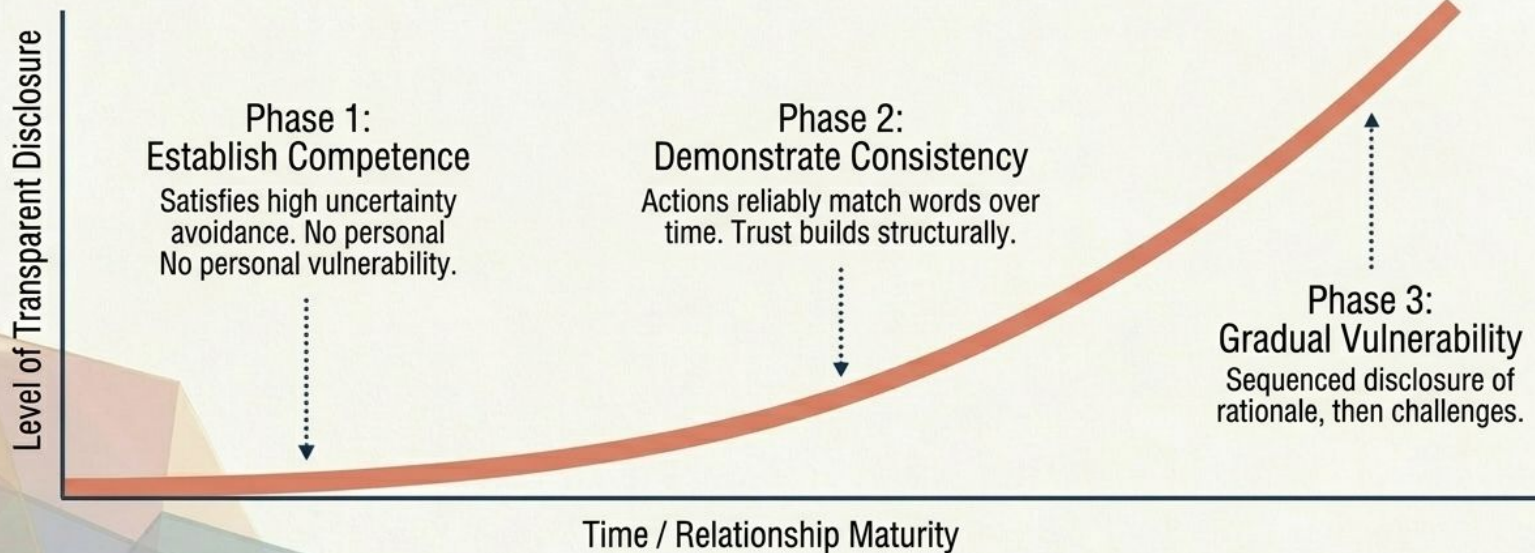


IBM trains global leaders to consciously shift these frames—both are authentic facets of identity.

# Synthesis: The Progressive Authenticity Timeline

Solving the paradox of transparency in high power-distance cultures.

**Application:** Nestlé utilizes this model to ensure leaders earn the right to transparency rather than deploying it recklessly on day one.



# Strategy 3: Organizational Culture Cultivation

Building the structural environment for a hybrid leadership culture.

## The Culturally Intelligent Hybrid Organization

### Explicit Norms

Articulating exactly why specific behaviors drive business outcomes.

Microsoft explicitly framed its "growth mindset" to explain the strategic logic of vulnerability.

### Safety Systems

Building structural, rather than just interpersonal, psychological safety mechanisms.

Pixar adapted its blunt "Braintrust" into structured, face-saving mechanisms for Asian studios.

### Inclusive Translation

Developing "cultural translators" who explicitly bridge normative conflicts.

Moving beyond compliance to establish rules for productive cross-cultural friction.

# Strategy 4: Selection & Placement Strategies

## Assess (Cultural Flexibility)

Use situational judgment tests to measure tolerance for ambiguity and adaptability, not just generic traits.

*Shell incorporates this directly into succession planning.*

## Sequence (Strategic Assignment)

Start with Low "Cultural Distance" assignments, scale to Moderate, and reserve High Distance for proven CQ leaders.

*P&G maps assignments incrementally using this model.*

## Compose (Team Architecture)

For highly diverse teams, deploy co-leadership structures pairing leaders with complementary cultural orientations.

# Strategy 5: Governance & Accountability

Systemic levers to enforce and measure nuanced leadership.



## Multi-Rater Feedback Systems

Disaggregate 360-data by the cultural background of the raters to spot specific cross-cultural misalignments and behavioral impacts.



## Contextual Performance Evaluation

Assess 'global effectiveness' and contextual adaptation, not just aggregate outcomes.

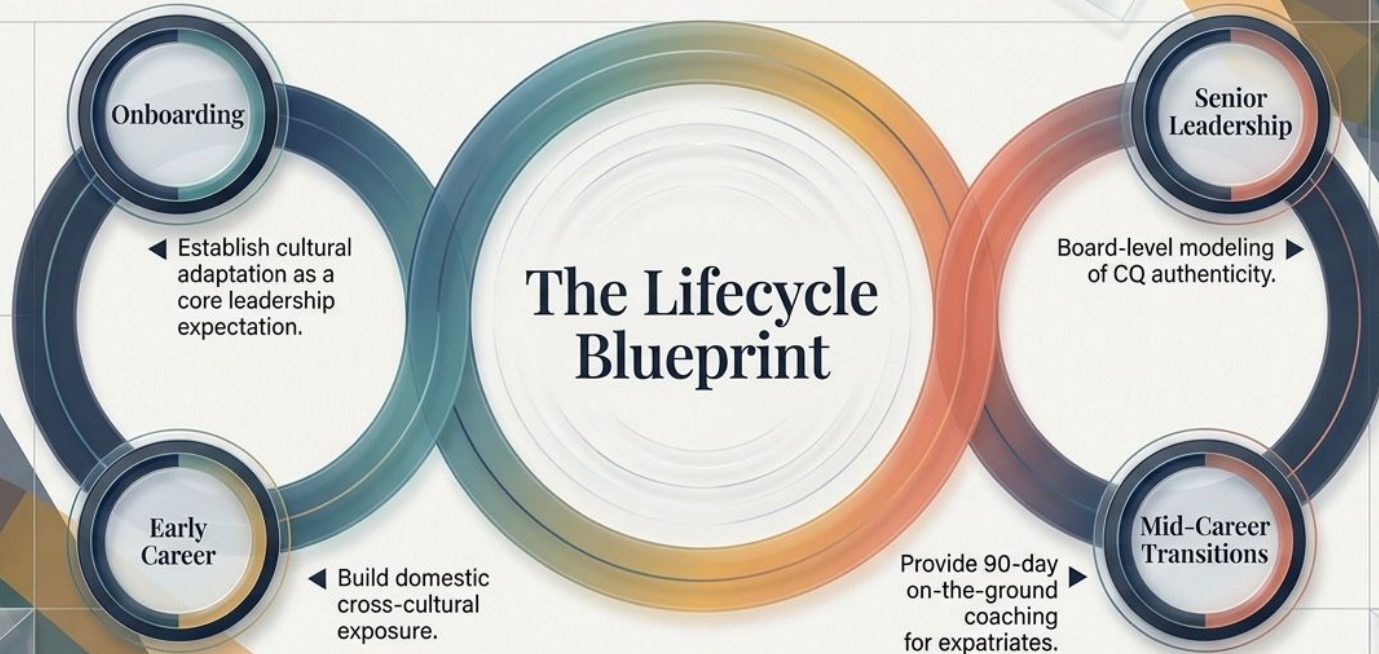
*GE rewards the specific ability to build followership across distinct cultural lines.*



## Clarity of Standards

Governance must explicitly draw the line between non-negotiables (ethics) and flexibles (decision-making processes and personal disclosure).

# Integrated Capability Architecture



# The Ultimate Glue: Goals & The Psychological Contract

When teams unite around a compelling shared purpose, cultural differences become assets rather than frictions.

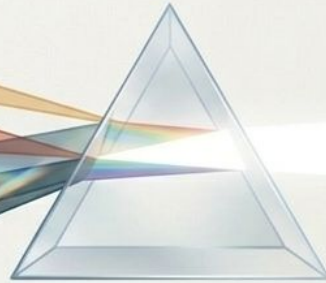
## Superordinate Goals

### Evolving the Psychological Contract

Explicitly communicating that “good leadership” will look visually different across regions, even while core corporate values remain identical.

Marriott explicitly communicates during onboarding that leadership adapts to local cultures while core service values remain identical—eliminating cognitive dissonance.

# The New Definition of 'Being Yourself'



The future of authentic leadership is not choosing between integrity and effectiveness. It is deepening our conception of authenticity altogether. Culturally intelligent leaders remain fiercely committed to their core values—but possess the wisdom to express those values in the beautiful diversity of the human cultural experience.