

The AI Evolution: Navigating the Shift from Tools to **Autonomy**

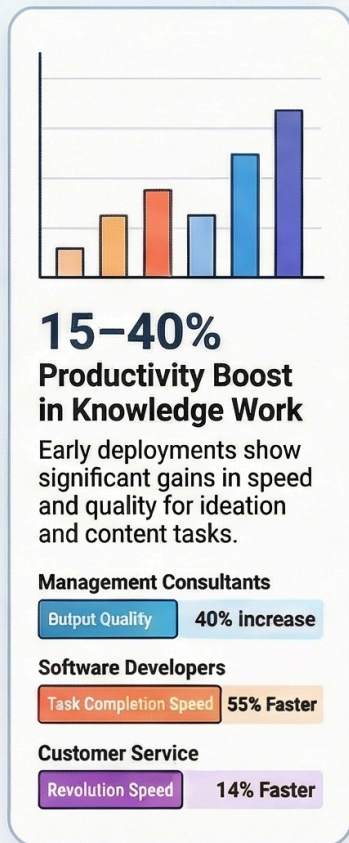
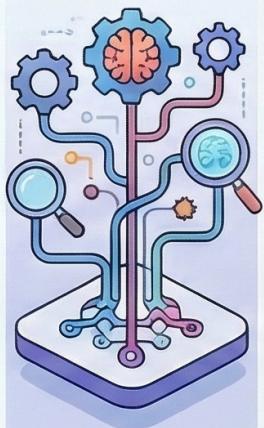
The AI landscape is shifting from reactive Large Language Models to autonomous agentic systems. While offering 15-40% **productivity gains**, this requires a transition from “am “automation” to “human-AI collaboration” for worker wellbeing.

The 5 Stages of AI Evolution



From Reactive LLMs to Autonomous Agents

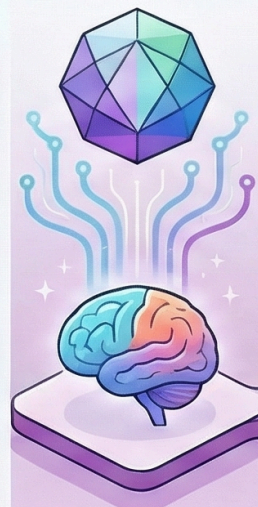
LLMs act as reactive tools, while Agentic and Multi-Agent systems autonomously plan and coordinate.



15-40% Productivity Boost in Knowledge Work

Early deployments show significant gains in speed and quality for ideation and content tasks.

- Management Consultants**
Output Quality: 40% increase
- Software Developers**
Task Completion Speed: 55% Faster
- Customer Service**
Revolution Speed: 14% Faster



The Speculative Frontier: AGI & Superintelligence

Hypothetical systems matching or exceeding human cognitive flexibility across all economically valuable tasks.

Strategic Organizational Responses

